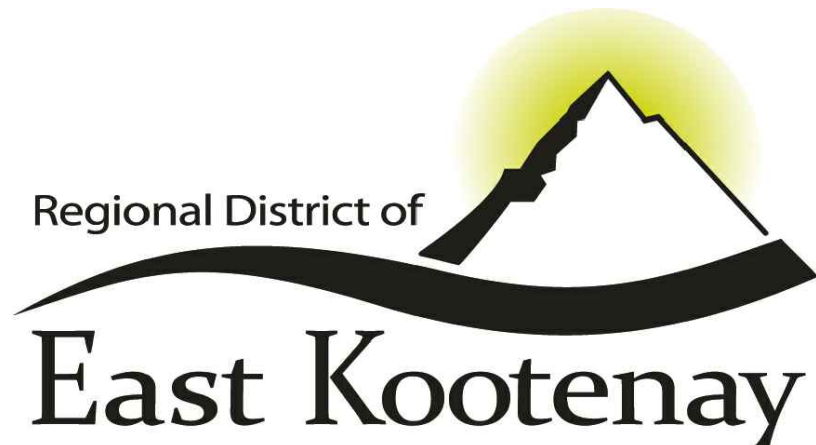


McElhanney Cover D - 2021-10-08  
DATE: 2023-07-25, 13:10 FILE: X:\2441\Projects\2441-01186-00 - REEK - Cold Spring Creek Debris Flow Mitigation Pt 2.10 - Drawings\10.3 Sheet Files\01186-00-01.dwg

# REGIONAL DISTRICT OF EAST KOOTENAY



CLIENT

ADDRESS / CONTACT INFO.

19 24TH AVENUE SOUTH, CRANBROOK BC V1C 2N5

PROJECT NAME

COLD SPRING CREEK DEBRIS FLOW MITIGATION

DESCRIPTION

DEBRIS FLOW BARRIER AND ASSOCIATED WORKS

McELHANNEY PROJECT

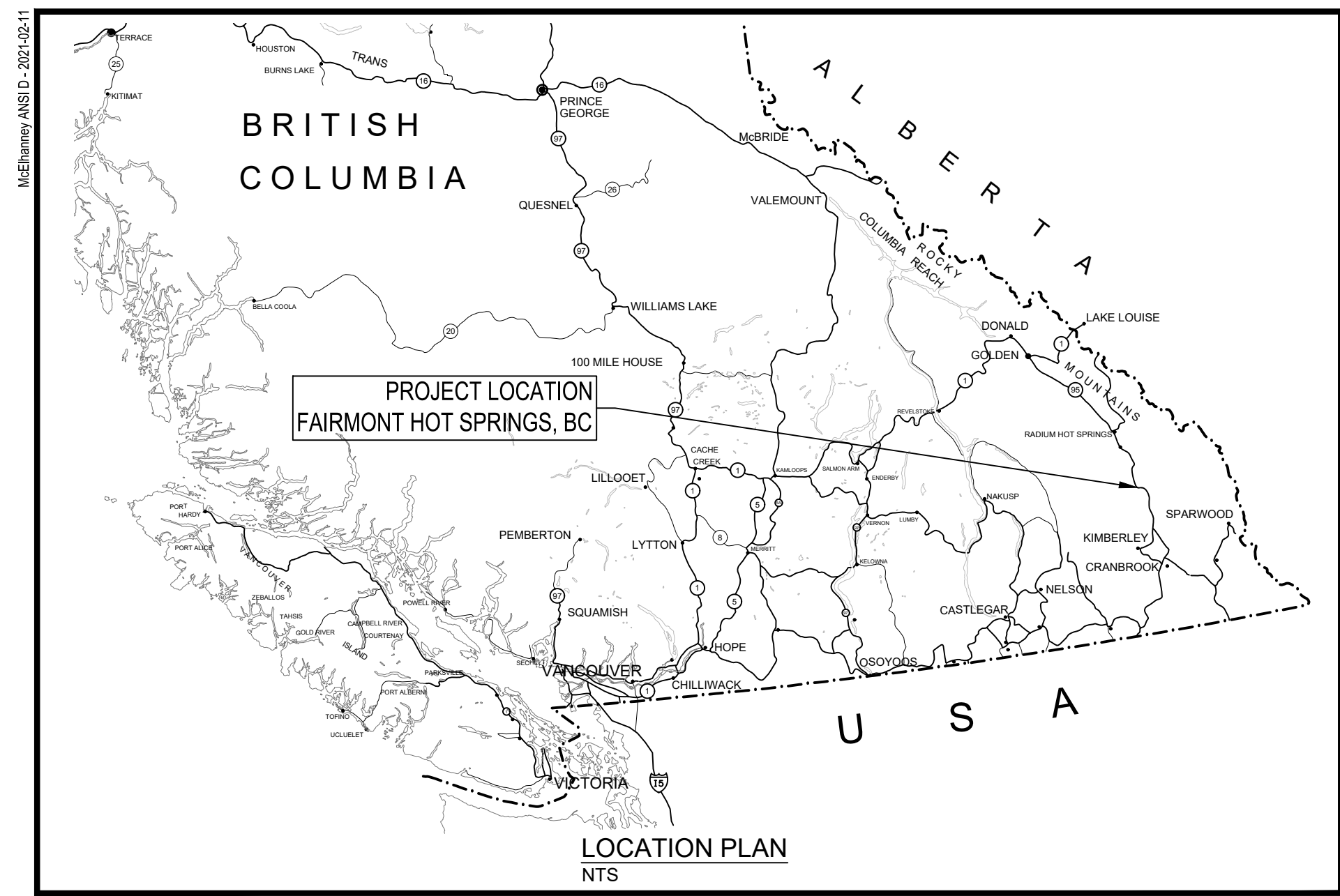
2441-01186-00

STATUS

ISSUED FOR CONSTRUCTION







**GENERAL NOTES:**

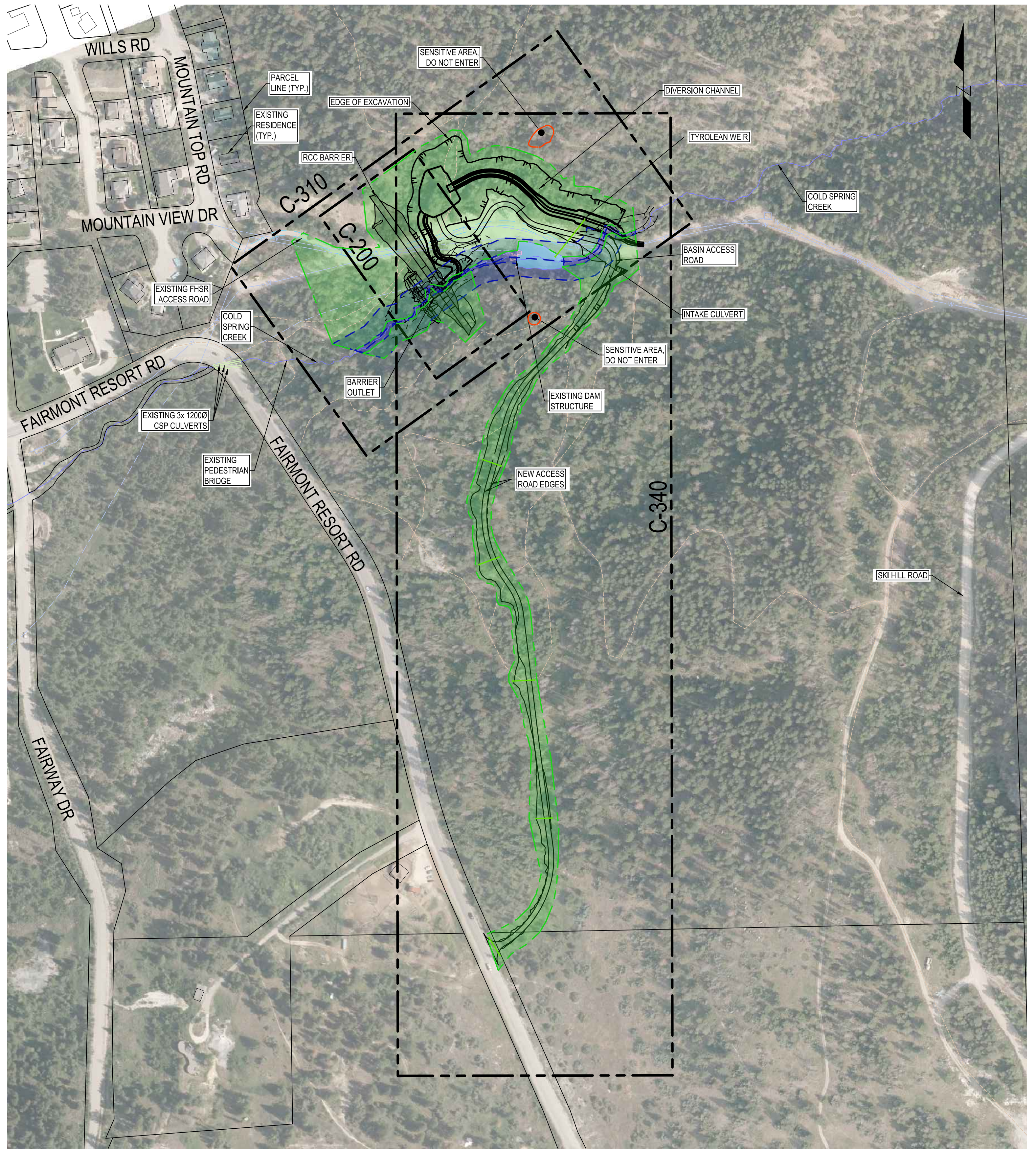
1. ALL DIMENSIONS ARE IN METRES UNLESS OTHERWISE NOTED.
2. ORTHOPHOTO RECEIVED FROM RDEK AND TAKEN BY AIRBORNE IMAGING, DATED 2015.
3. LIDAR OBTAINED FROM GeoBC.ca PROPERTY OF MINISTRY OF FORESTS. DATA CAPTURED JULY 2018.
4. CONTOUR INTERVAL IS 1.0m MINOR AND 5.0m MAJOR UNLESS OTHERWISE NOTED.
5. CADASTRAL OBTAINED FROM THE REGIONAL DISTRICT OF EAST KOOTENAY.
6. WATERLINE AND UTILITY LOCATION INFORMATION IS INFERRED BASED ON PARTIAL ASBLUT DATA. THEY ARE TO BE CONFIRMED PRIOR TO ANY WORKS NEARBY.
7. COORDINATE SYSTEM IS NAD 83 UTM ZONE N11. VERTICAL DATUM IS CGVD2013.
8. UNLESS BGC AND MCELHANNNEY AGREES OTHERWISE IN WRITING, THIS DRAWING SHALL NOT BE MODIFIED OR USED FOR ANY PURPOSE OTHER THAN THE PURPOSE FOR WHICH IT WAS GENERATED. BGC AND MCELHANNNEY SHALL HAVE NO LIABILITY FOR ANY DAMAGES OR LOSS ARISING IN ANY WAY FROM ANY USE OR MODIFICATION OF THIS DOCUMENT NOT AUTHORIZED BY BGC AND MCELHANNNEY. ANY USE OR RELIANCE UPON THIS DOCUMENT OR ITS CONTENT BY THIRD PARTIES SHALL BE AT SUCH THIRD PARTIES' SOLE RISK.

**DRAWING INDEX**

SHEET #	REVISION	NAME
G-001	0	COVER SHEET
G-002	0	DRAWING INDEX AND SITE LOCATION
C-200	0	BARRIER - OVERALL PLAN
C-201	0	BARRIER - REFERENCE LINE PROFILE
C-210	0	BARRIER - EXCAVATION PLAN
C-220	0	BARRIER - EXCAVATION SECTIONS
C-230	0	BARRIER - TYPICAL SECTIONS (SHEET 1 OF 3)
C-231	0	BARRIER - TYPICAL SECTIONS (SHEET 2 OF 3)
C-232	0	BARRIER - TYPICAL SECTIONS (SHEET 3 OF 3)
C-240	0	BARRIER - DOWNSTREAM EROSION PROTECTION PLAN PROFILE AND SECTIONS
C-300	0	DIVERSION CHANNEL AND BASIN WORKS KEY PLAN
C-310	0	DIVERSION CHANNEL AND BASIN GRADING PLAN
C-311	0	DIVERSION CHANNEL PROFILES
C-312	0	BASIN ACCESS ROAD PLAN PROFILE
C-315	0	DIVERSION CHANNEL DETAILS
C-316	0	DIVERSION CHANNEL TYPICAL SECTIONS
C-317	0	INTAKE WEIR DETAILS (SHEET 1 OF 2)
C-318	0	INTAKE WEIR DETAILS (SHEET 2 OF 2)
C-330	0	WATERMAIN PLAN
C-331	0	WATERMAIN PLAN AND PROFILE, 1 OF 2
C-332	0	WATERMAIN PLAN AND PROFILE, 2 OF 2
C-340	0	ACCESS ROAD PLAN AND PROFILE
S-001	0	DEBRIS BARRIER - OUTLET - STRUCTURAL NOTES
S-011	0	DEBRIS BARRIER - STRUCTURE OUTLINE - PLAN
S-021	0	DEBRIS BARRIER - STRUCTURAL OUTLINE - ELEVATION
S-022	0	DEBRIS BARRIER - STRUCTURAL OUTLINE - ELEVATION
S-023	0	DEBRIS BARRIER - STRUCTURAL OUTLINE - LONGITUDINAL SECTION
S-024	0	DEBRIS BARRIER - STRUCTURAL OUTLINE - LONGITUDINAL SECTION
S-026	0	DEBRIS BARRIER - STRUCTURAL OUTLINE - TRANSVERSE SECTION
S-027	0	DEBRIS BARRIER - STRUCTURAL OUTLINE - TRANSVERSE SECTION
S-028	0	DEBRIS BARRIER - STRUCTURAL OUTLINE - TRANSVERSE SECTION
S-029	0	DEBRIS BARRIER - STRUCTURAL OUTLINE - TRANSVERSE SECTION
S-031	0	DEBRIS BARRIER - REINFORCEMENT - PLANS
S-032	0	DEBRIS BARRIER - REINFORCEMENT - PLANS
S-035	0	DEBRIS BARRIER - REINFORCEMENT - UPSTREAM ELEVATION A
S-036	0	DEBRIS BARRIER - REINFORCEMENT - DOWNSTREAM ELEVATION B
S-037	0	DEBRIS BARRIER - REINFORCEMENT - LONGITUDINAL SECTION C
S-041	0	DEBRIS BARRIER - REINFORCEMENT - LONGITUDINAL SECTION D
S-042	0	DEBRIS BARRIER - REINFORCEMENT - LONGITUDINAL SECTION E
S-043	0	DEBRIS BARRIER - REINFORCEMENT - TRANSVERSE SECTION F
S-044	0	DEBRIS BARRIER - REINFORCEMENT - TRANSVERSE SECTION G
S-045	0	DEBRIS BARRIER - REINFORCEMENT - TRANSVERSE SECTION H
S-046	0	DEBRIS BARRIER - REINFORCEMENT - TRANSVERSE SECTION J
S-047	0	DEBRIS BARRIER - REINFORCEMENT - TRANSVERSE SECTION K
S-051	0	DEBRIS BARRIER - STRUCTURAL OUTLINE - EMBEDDED STEEL FABRICATIONS
S-071	0	DEBRIS BARRIER - OUTLET SLOT GRILLAGE - LAYOUT - DETAIL BEAM A,B
S-075	0	DEBRIS BARRIER - OUTLET SLOT GRILLAGE - LAYOUT - DETAIL BEAM 1, 2 AND SPACER

**LEGEND:**

- INFERRED BURIED WATERLINE (Blue dashed line with 'W')
- EXISTING PUBLIC TRAILS (Yellow dashed line)
- SENSITIVE AREA, DO NOT ENTER (Red dashed line)
- GRUBBING LIMIT (CLEARING BY OTHERS) (Green shaded area)
- RCC (Grey shaded area)
- OUTLET AREA (Dark grey shaded area)
- RIPIARIAN ZONE - CLEARING REQUIRED (Blue shaded area)

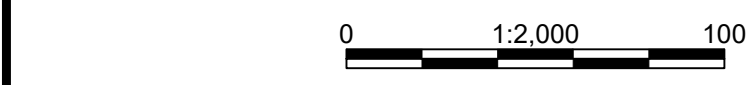


Rev	Date	Description	Drawn	Design	App'd
0	2023-07-25	ISSUED FOR CONSTRUCTION	SS	KM	KB

THIS DRAWING AND DESIGN IS THE PROPERTY OF MCELHANNNEY AND SHALL NOT BE USED, REUSED OR REPRODUCED WITHOUT THE CONSENT OF MCELHANNNEY. MCELHANNNEY WILL NOT BE HELD RESPONSIBLE FOR THE IMPROPER OR UNAUTHORIZED USE OF THIS DRAWING AND DESIGN.

THIS DRAWING AND DESIGN HAS BEEN PREPARED FOR THE CLIENT IDENTIFIED, TO MEET THE STANDARDS AND REQUIREMENTS OF THE APPLICABLE PUBLIC AGENCIES AT THE TIME OF PREPARATION. MCELHANNNEY, ITS EMPLOYEES, SUBCONSULTANTS AND AGENTS WILL NOT BE LIABLE FOR ANY LOSSES OR OTHER CONSEQUENCES RESULTING FROM THE USE OR RELIANCE UPON, OR ANY CHANGES MADE TO, THIS DRAWING, BY ANY THIRD PARTY, INCLUDING CONTRACTORS, SUPPLIERS, CONSULTANTS AND STAKEHOLDERS, OR THEIR EMPLOYEES OR AGENTS, WITHOUT MCELHANNNEY'S PRIOR WRITTEN CONSENT.

INFORMATION ON EXISTING UNDERGROUND FACILITIES MAY NOT BE COMPLETE OR ACCURATE. MCELHANNNEY, ITS EMPLOYEES AND DIRECTORS ARE NOT RESPONSIBLE NOR LIABLE FOR THE LOCATION OF ANY UNDERGROUND CONDUITS, PIPES, CABLES OR OTHER FACILITIES WHETHER SHOWN OR OMITTED FROM THIS PLAN. PRIOR TO CONSTRUCTION CONTRACTOR SHALL EXPOSE LOCATIONS OF ALL EXISTING FACILITIES BY HAND DIGGING OR HYDROVAC AND ADVISE THE ENGINEER OF POTENTIAL CONFLICTS.



ORIGINAL DWG SIZE: ANSI D (22" x 34")

**McElhanney**

PO Box 1505  
Unit C - 402 Highway 3  
Fermie BC  
Canada V0B 1M0  
T 250 425 0158

**BGC**

PERMIT TO PRACTICE  
MCELHANNNEY LTD.  
PERMIT NUMBER: 1003299  
ENGINEERS AND GEOSCIENTISTS BC

Approved Sealed

REGIONAL DISTRICT OF EAST KOOTENAY  
19 24TH AVENUE SOUTH, CRANBROOK BC V1C 2N5

**COLD SPRING CREEK  
DEBRIS FLOW MITIGATION  
DRAWING INDEX AND SITE LOCATION**

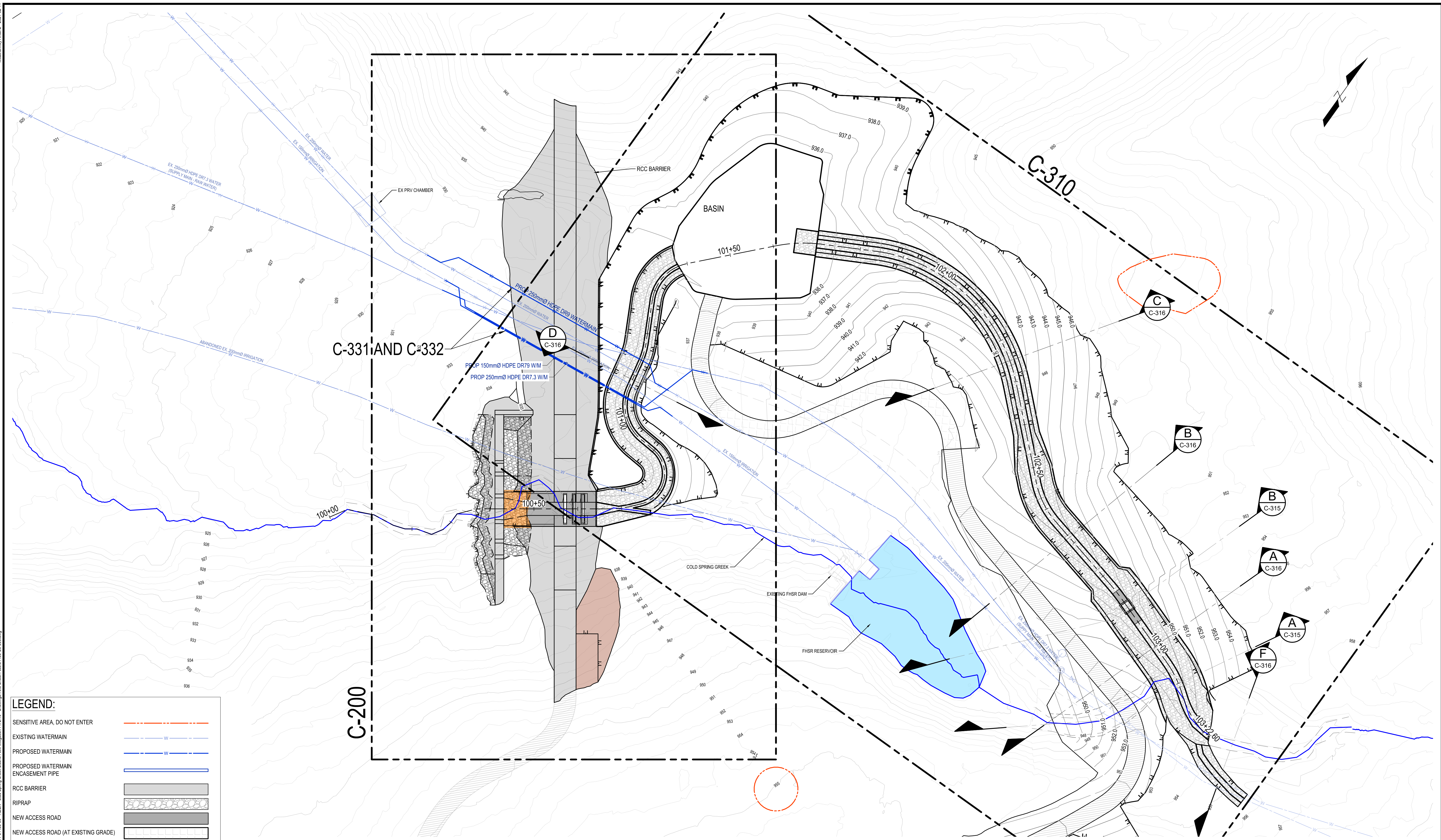
Drawing No. **G-002**

Project Number 2441-01186

Rev. 0

DESTROY ALL PRINTS BEARING PREVIOUS REVISION





**LEGEND:**

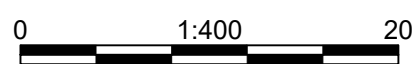
SENSITIVE AREA, DO NOT ENTER	
EXISTING WATERMAIN	
PROPOSED WATERMAIN	
PROPOSED WATERMAIN ENCASEMENT PIPE	
RCC BARRIER	
RIPRAP	
NEW ACCESS ROAD	
NEW ACCESS ROAD (AT EXISTING GRADE)	

THIS DRAWING AND DESIGN IS THE PROPERTY OF McELHANNEY AND SHALL NOT BE USED, REUSED OR REPRODUCED WITHOUT THE CONSENT OF McELHANNEY. McELHANNEY WILL NOT BE HELD RESPONSIBLE FOR THE IMPROPER OR UNAUTHORIZED USE OF THIS DRAWING AND DESIGN.

THIS DRAWING AND DESIGN HAS BEEN PREPARED FOR THE CLIENT IDENTIFIED, TO MEET THE STANDARDS AND REQUIREMENTS OF THE APPLICABLE PUBLIC AGENCIES AT THE TIME OF PREPARATION. McELHANNEY, ITS EMPLOYEES, SUBCONSULTANTS AND AGENTS WILL NOT BE LIABLE FOR ANY LOSSES OR OTHER CONSEQUENCES RESULTING FROM THE USE OR RELIANCE UPON, OR ANY CHANGES MADE TO, THIS DRAWING, BY ANY THIRD PARTY, INCLUDING CONTRACTORS, SUPPLIERS, CONSULTANTS AND STAKEHOLDERS, OR THEIR EMPLOYEES OR AGENTS, WITHOUT McELHANNEY'S PRIOR WRITTEN CONSENT.

INFORMATION ON EXISTING UNDERGROUND FACILITIES MAY NOT BE COMPLETE OR ACCURATE. McELHANNEY, ITS EMPLOYEES AND DIRECTORS ARE NOT RESPONSIBLE NOR LIABLE FOR THE LOCATION OF ANY UNDERGROUND CONDUITS, PIPES, CABLES OR OTHER FACILITIES WHETHER SHOWN OR OMITTED FROM THIS PLAN. PRIOR TO CONSTRUCTION CONTRACTOR SHALL EXPOSE LOCATIONS OF ALL EXISTING FACILITIES BY HAND DIGGING OR HYDROVAC AND ADVISE THE ENGINEER OF POTENTIAL CONFLICTS.

ORIGINAL DWG SIZE: ANSI D (22" x 34")



PO Box 1505  
Unit C - 402 Highway 3  
Fernie BC  
Canada V0B 1M0  
T 250 425 0158

PERMIT TO PRACTICE  
McELHANNEY LTD.  
PERMIT NUMBER: 1003299  
ENGINEERS AND GEOSCIENTISTS BC

Approved Sealed

REGIONAL DISTRICT OF EAST KOOTENAY  
19 24TH AVENUE SOUTH, CRANBROOK BC V1C 2N5  
**COLD SPRING CREEK  
DEBRIS FLOW MITIGATION  
KEY PLAN**

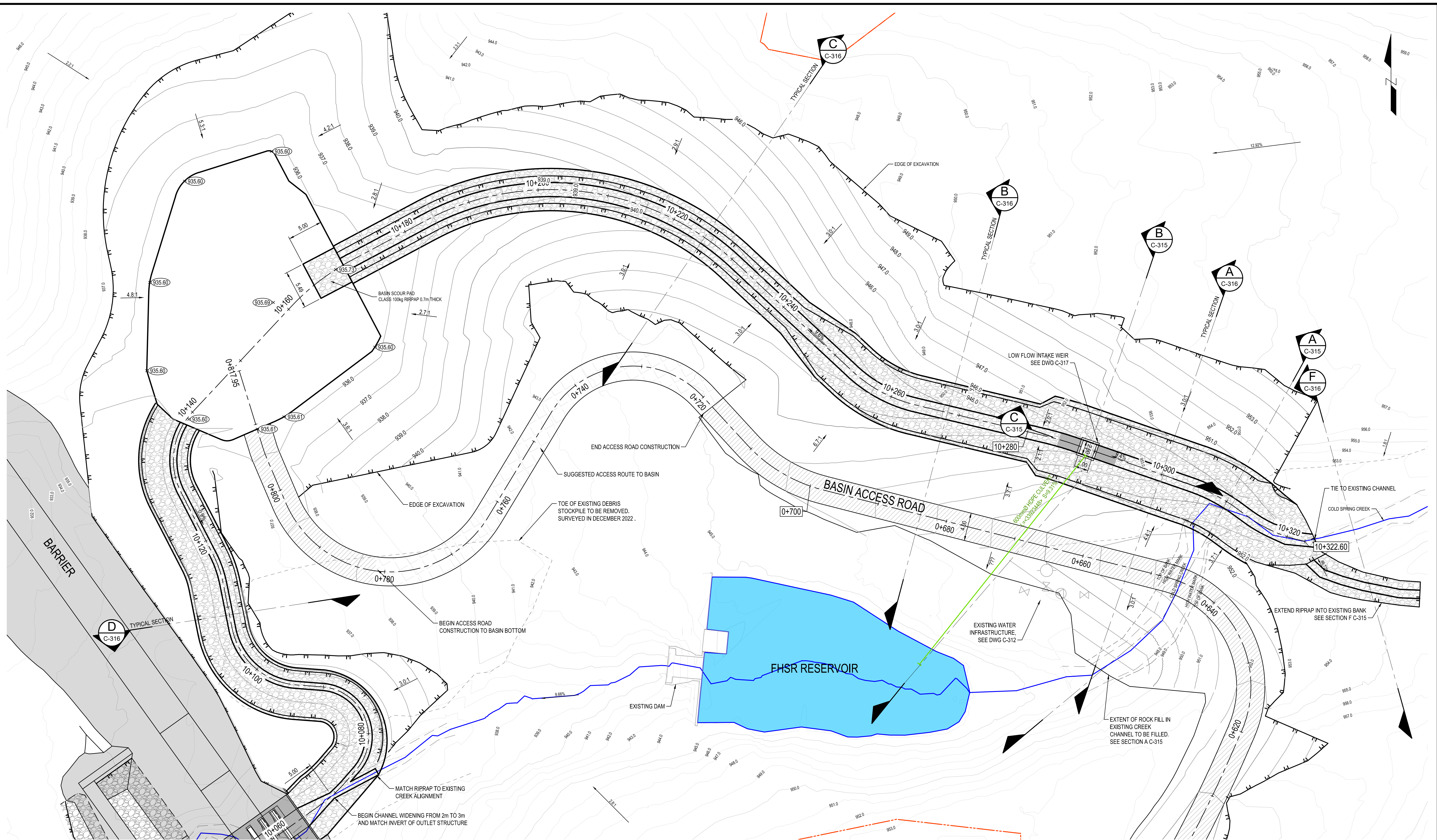
Drawing No.

**C-300**

Project Number  
2441-01186

Rev.  
0



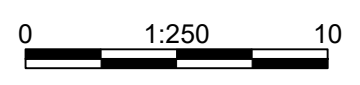


THIS DRAWING AND DESIGN IS THE PROPERTY OF McELHANNEY AND SHALL NOT BE USED, REUSED OR REPRODUCED WITHOUT THE CONSENT OF McELHANNEY. McELHANNEY WILL NOT BE HELD RESPONSIBLE FOR THE IMPROPER OR UNAUTHORIZED USE OF THIS DRAWING AND DESIGN.

THIS DRAWING AND DESIGN HAS BEEN PREPARED FOR THE CLIENT IDENTIFIED, TO MEET THE STANDARDS AND REQUIREMENTS OF THE APPLICABLE PUBLIC AGENCIES AT THE TIME OF PREPARATION. McELHANNEY, ITS EMPLOYEES, SUBCONSULTANTS AND AGENTS WILL NOT BE LIABLE FOR ANY LOSSES OR OTHER CONSEQUENCES RESULTING FROM THE USE OR RELIANCE UPON, OR ANY CHANGES MADE TO, THIS DRAWING, BY ANY THIRD PARTY, INCLUDING CONTRACTORS, SUPPLIERS, CONSULTANTS AND STAKEHOLDERS, OR THEIR EMPLOYEES OR AGENTS, WITHOUT McELHANNEY'S PRIOR WRITTEN CONSENT.

INFORMATION ON EXISTING UNDERGROUND FACILITIES MAY NOT BE COMPLETE OR ACCURATE. McELHANNEY, ITS EMPLOYEES AND DIRECTORS ARE NOT RESPONSIBLE NOR LIABLE FOR THE LOCATION OF ANY UNDERGROUND CONDUITS, PIPES, CABLES OR OTHER FACILITIES WHETHER SHOWN OR OMITTED FROM THIS PLAN. PRIOR TO CONSTRUCTION CONTRACTOR SHALL EXPOSE LOCATIONS OF ALL EXISTING FACILITIES BY HAND DIGGING OR HYDROVAC AND ADVISE THE ENGINEER OF POTENTIAL CONFLICTS.

ORIGINAL DWG SIZE: ANSD D (22" x 34")



**McElhanney**

PO Box 1505  
Unit C - 402 Highway 3  
Fernie BC  
Canada V0B 1M0  
T 250 425 0158

PERMIT TO PRACTICE  
McELHANNEY LTD.  
PERMIT NUMBER: 1003299  
ENGINEERS AND GEOSCIENTISTS BC

Approved Sealed

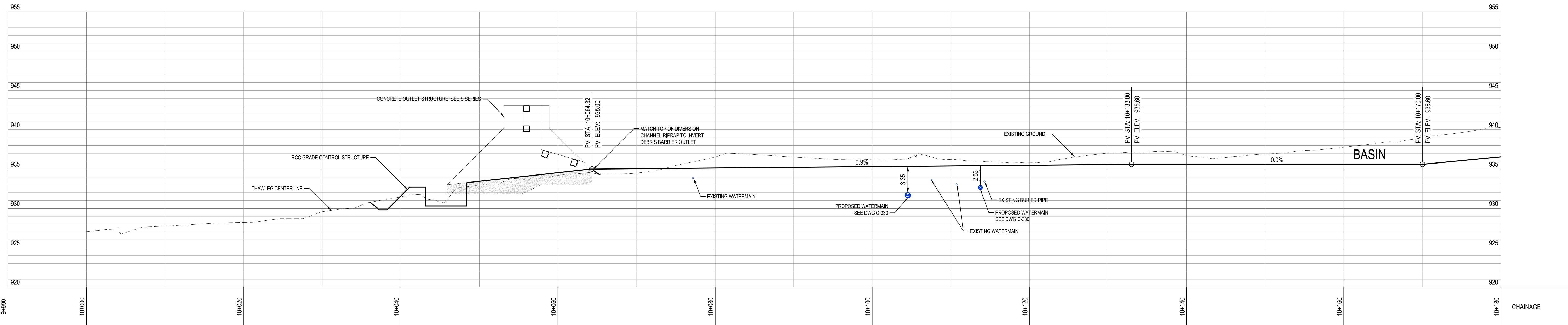
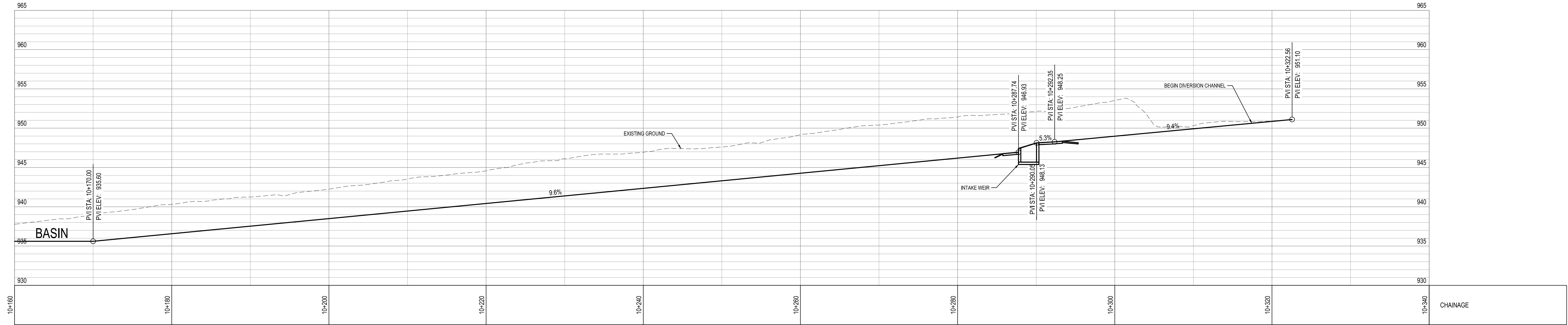
REGIONAL DISTRICT OF EAST KOOTENAY  
19 24TH AVENUE SOUTH, CRANBROOK BC V1C 2N5

**COLD SPRING CREEK  
DEBRIS FLOW MITIGATION  
DIVERSION CHANNEL AND BASIN  
FINAL GRADING**

Drawing No. **C-310**

Project Number 2441-01186 Rev. 0





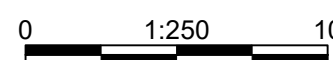
Rev	Date	Description	Drawn	Design	App'd
0	2023-07-25	ISSUED FOR CONSTRUCTION	SS	KM	KB

THIS DRAWING AND DESIGN IS THE PROPERTY OF McELHANNEY AND SHALL NOT BE USED, REUSED OR REPRODUCED WITHOUT THE CONSENT OF McELHANNEY. McELHANNEY WILL NOT BE HELD RESPONSIBLE FOR THE IMPROPER OR UNAUTHORIZED USE OF THIS DRAWING AND DESIGN.

THIS DRAWING AND DESIGN HAS BEEN PREPARED FOR THE CLIENT IDENTIFIED, TO MEET THE STANDARDS AND REQUIREMENTS OF THE APPLICABLE PUBLIC AGENCIES AT THE TIME OF PREPARATION. McELHANNEY, ITS EMPLOYEES, SUBCONSULTANTS AND AGENTS WILL NOT BE LIABLE FOR ANY LOSSES OR OTHER CONSEQUENCES RESULTING FROM THE USE OR RELIANCE UPON, OR ANY CHANGES MADE TO, THIS DRAWING, BY ANY THIRD PARTY, INCLUDING CONTRACTORS, SUPPLIERS, CONSULTANTS AND STAKEHOLDERS, OR THEIR EMPLOYEES OR AGENTS, WITHOUT McELHANNEY'S PRIOR WRITTEN CONSENT.

INFORMATION ON EXISTING UNDERGROUND FACILITIES MAY NOT BE COMPLETE OR ACCURATE. McELHANNEY, ITS EMPLOYEES AND DIRECTORS ARE NOT RESPONSIBLE NOR LIABLE FOR THE LOCATION OF ANY UNDERGROUND CONDUITS, PIPES, CABLES OR OTHER FACILITIES WHETHER SHOWN OR OMITTED FROM THIS PLAN. PRIOR TO CONSTRUCTION CONTRACTOR SHALL EXPOSE LOCATIONS OF ALL EXISTING FACILITIES BY HAND DIGGING OR HYDROVAC AND ADVISE THE ENGINEER OF POTENTIAL CONFLICTS.

ORIGINAL DWG SIZE: ANSI D (22" x 34")



PO Box 1505  
Unit C - 402 Highway 3  
Fernie BC  
Canada V0B 1M0  
T 250 425 0158

PERMIT TO PRACTICE  
McELHANNEY LTD.  
PERMIT NUMBER: 1003299  
ENGINEERS AND GEOSCIENTISTS BC

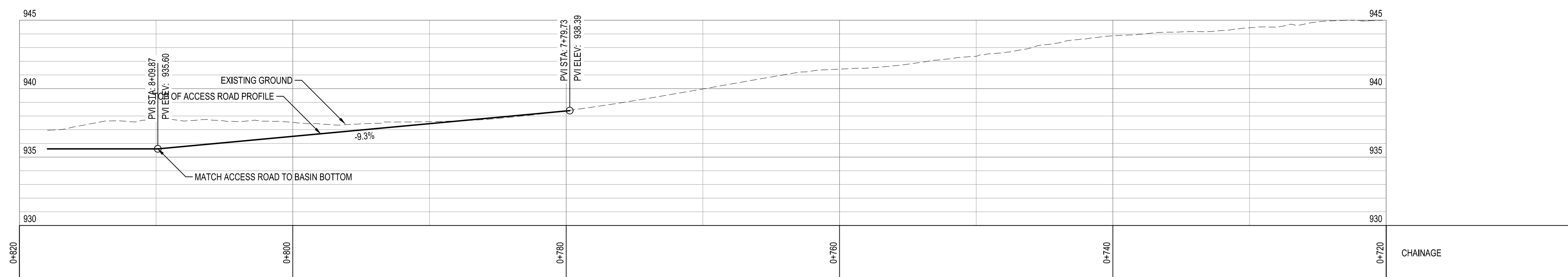
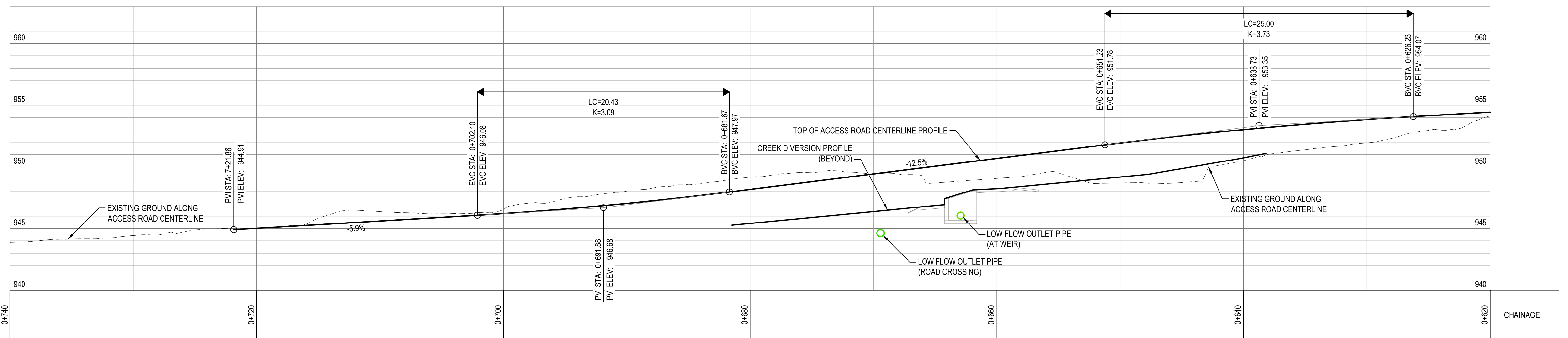
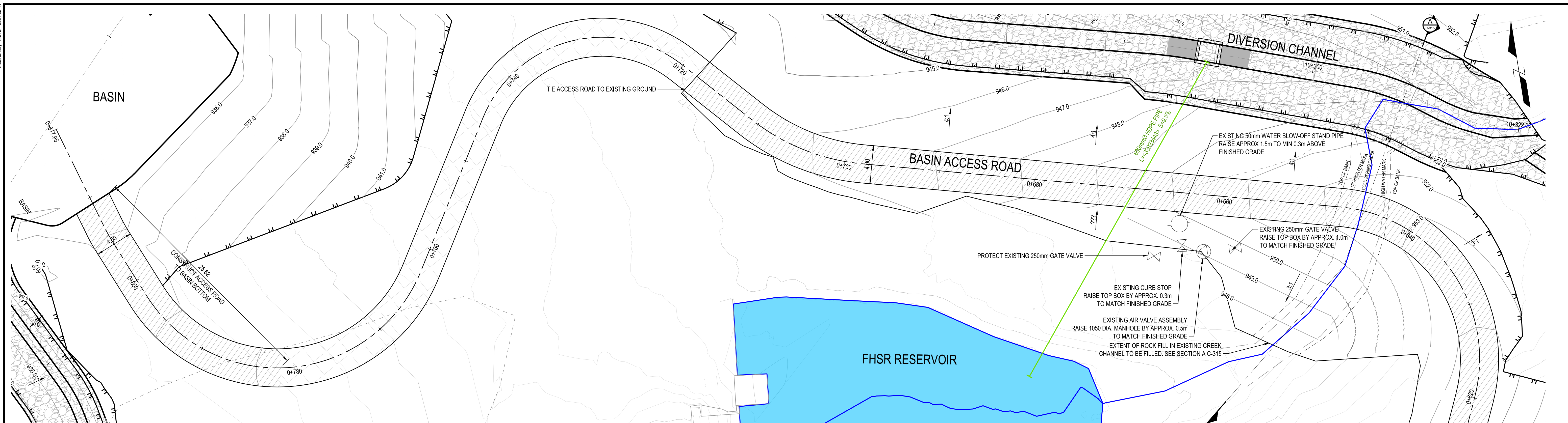
Approved Sealed

REGIONAL DISTRICT OF EAST KOOTENAY  
19 24TH AVENUE SOUTH, CRANBROOK BC V1C 2N5

**COLD SPRING CREEK  
DEBRIS FLOW MITIGATION  
DIVERSION CHANNEL PROFILES**

Project Number	Rev.
2441-01186	0



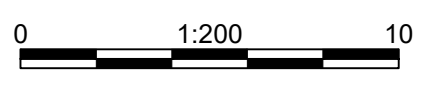


THIS DRAWING AND DESIGN IS THE PROPERTY OF McELHANNEY AND SHALL NOT BE USED, REUSED OR REPRODUCED WITHOUT THE CONSENT OF McELHANNEY. McELHANNEY WILL NOT BE HELD RESPONSIBLE FOR THE IMPROPER OR UNAUTHORIZED USE OF THIS DRAWING AND DESIGN.

THIS DRAWING AND DESIGN HAS BEEN PREPARED FOR THE CLIENT IDENTIFIED, TO MEET THE STANDARDS AND REQUIREMENTS OF THE APPLICABLE PUBLIC AGENCIES AT THE TIME OF PREPARATION. McELHANNEY, ITS EMPLOYEES, SUBCONSULTANTS AND AGENTS WILL NOT BE LIABLE FOR ANY LOSSES OR OTHER CONSEQUENCES RESULTING FROM THE USE OR RELIANCE UPON, OR ANY CHANGES MADE TO, THIS DRAWING, BY ANY THIRD PARTY, INCLUDING CONTRACTORS, SUPPLIERS, CONSULTANTS AND STAKEHOLDERS, OR THEIR EMPLOYEES OR AGENTS, WITHOUT McELHANNEY'S PRIOR WRITTEN CONSENT.

INFORMATION ON EXISTING UNDERGROUND FACILITIES MAY NOT BE COMPLETE OR ACCURATE. McELHANNEY, ITS EMPLOYEES AND DIRECTORS ARE NOT RESPONSIBLE NOR LIABLE FOR THE LOCATION OF ANY UNDERGROUND CONDUITS, PIPES, CABLES OR OTHER FACILITIES WHETHER SHOWN OR OMITTED FROM THIS PLAN. PRIOR TO CONSTRUCTION CONTRACTOR SHALL EXPOSE LOCATIONS OF ALL EXISTING FACILITIES BY HAND DIGGING OR HYDROVAC AND ADVISE THE ENGINEER OF POTENTIAL CONFLICTS.

ORIGINAL DWG SIZE: ANSI D (22" x 34")



**McElhanney**

PO Box 1505  
Unit C - 402 Highway 3  
Fernie BC  
Canada V0B 1M0  
T 250 425 0158

PERMIT TO PRACTICE  
McELHANNEY LTD.  
PERMIT NUMBER: 1003299  
ENGINEERS AND GEOSCIENTISTS BC

Approved Sealed

REGIONAL DISTRICT OF EAST KOOTENAY  
19 24TH AVENUE SOUTH, CRANBROOK BC V1C 2N5

**COLD SPRING CREEK  
DEBRIS FLOW MITIGATION  
BASIN ACCESS ROAD PLAN PROFILE**

Drawing No.  
**C-312**

Project Number  
2441-01186

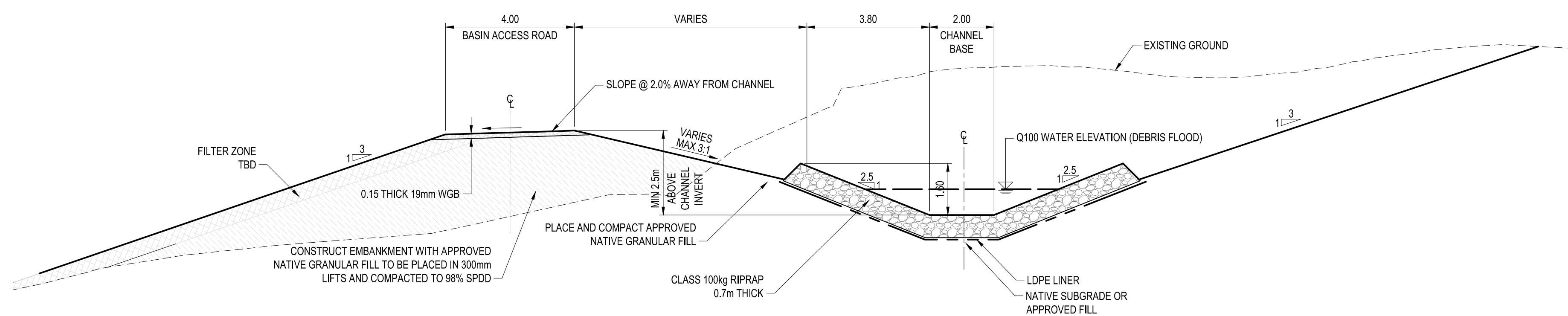
Rev.  
0

Rev	Date	Description	Drawn	Design	App'd
0	2023-07-25	ISSUED FOR CONSTRUCTION	SS	KM	KB

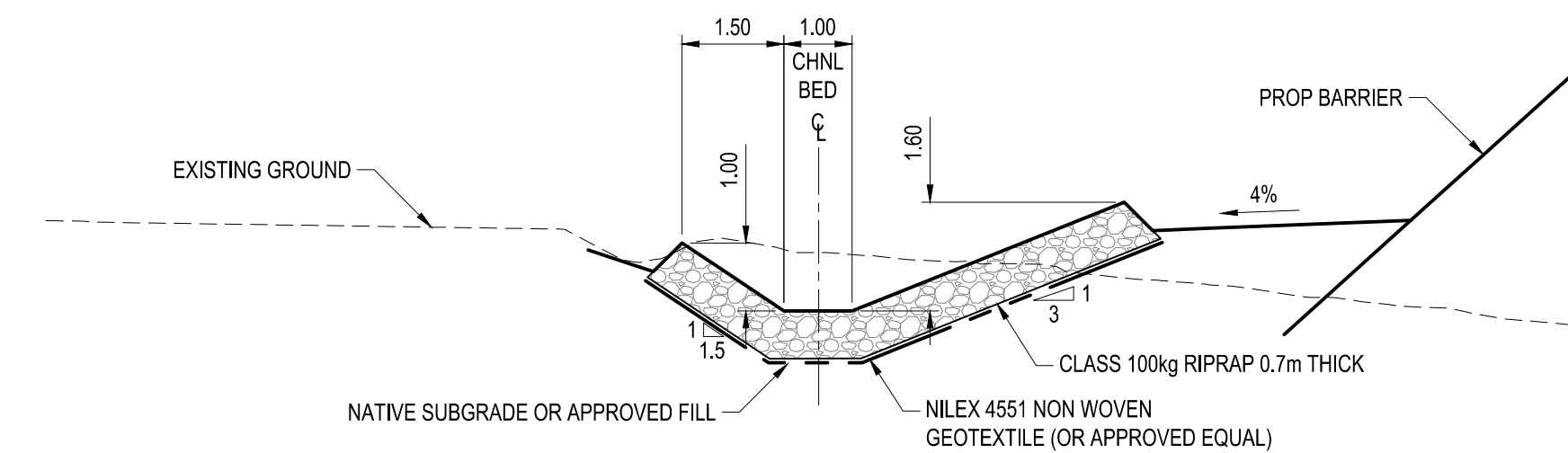




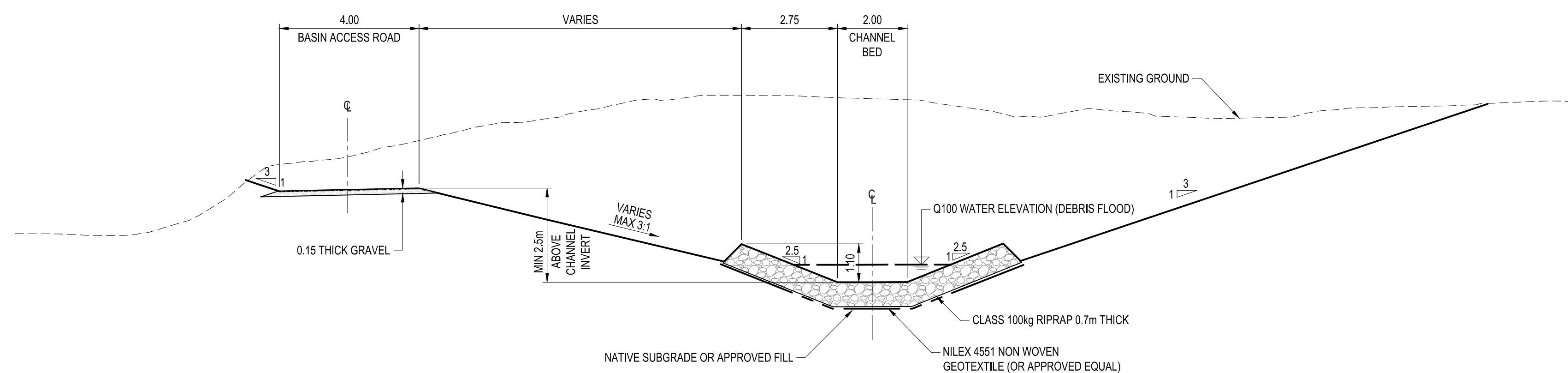




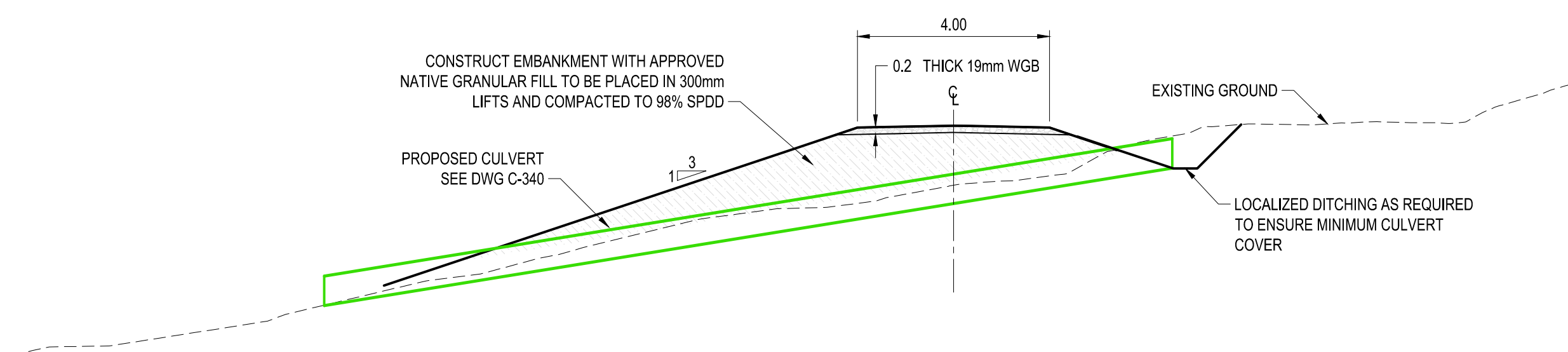
**A** TYPICAL SECTION 10+318 - 10+295  
C-310 SCALE 1:100



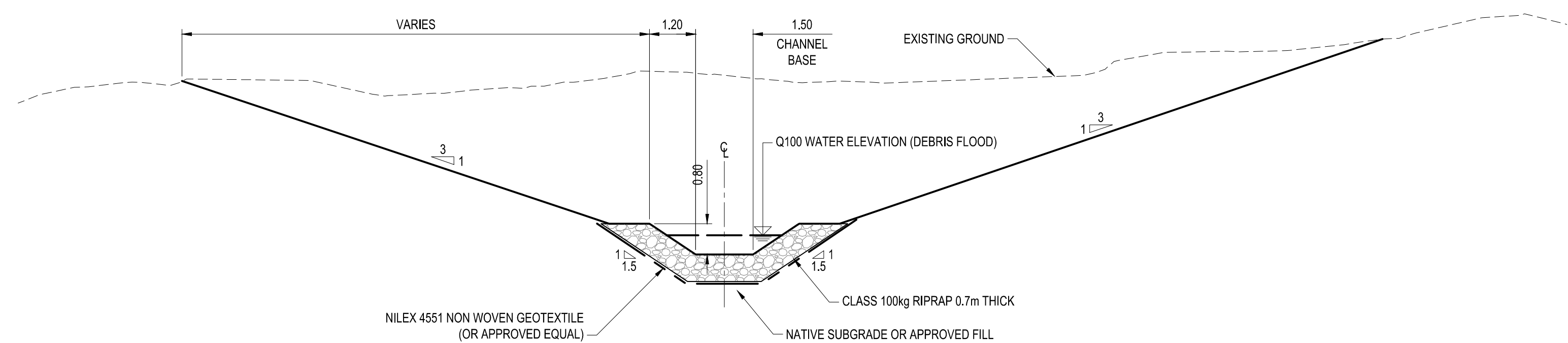
**D** TYPICAL SECTION 10+065 - 10+138  
C-310 SCALE 1:100



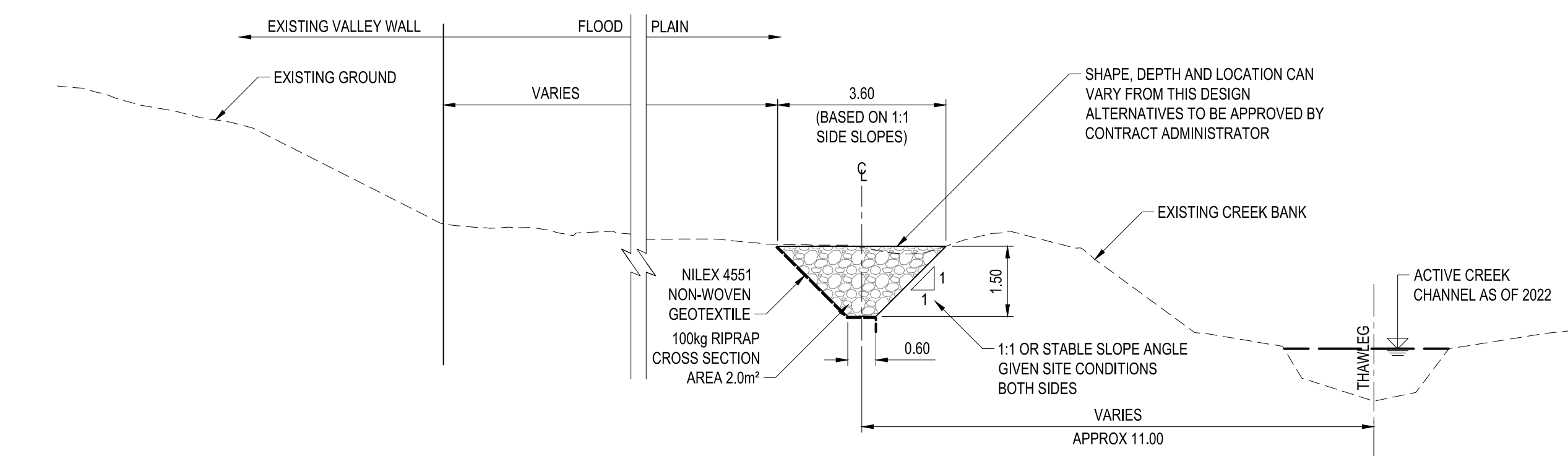
**B** TYPICAL SECTION 10+295 - 10+250  
C-310 SCALE 1:100



**E** TYPICAL SECTION - ACCESS ROAD  
C-310 SCALE 1:100



**C** TYPICAL SECTION 10+250 - 10+169  
C-310 SCALE 1:100



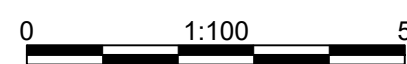
**F** TYPICAL SECTION - SET-BACK EROSION PROTECTION  
UPSTREAM OF CREEK DIVERSION  
C-310 SCALE 1:100

THIS DRAWING AND DESIGN IS THE PROPERTY OF McELHANNEY AND SHALL NOT BE USED, REUSED OR REPRODUCED WITHOUT THE CONSENT OF McELHANNEY. McELHANNEY WILL NOT BE HELD RESPONSIBLE FOR THE IMPROPER OR UNAUTHORIZED USE OF THIS DRAWING AND DESIGN.

THIS DRAWING AND DESIGN HAS BEEN PREPARED FOR THE CLIENT IDENTIFIED, TO MEET THE STANDARDS AND REQUIREMENTS OF THE APPLICABLE PUBLIC AGENCIES AT THE TIME OF PREPARATION. McELHANNEY, ITS EMPLOYEES, SUBCONSULTANTS AND AGENTS WILL NOT BE LIABLE FOR ANY LOSSES OR OTHER CONSEQUENCES RESULTING FROM THE USE OR RELIANCE UPON, OR ANY CHANGES MADE TO, THIS DRAWING, BY ANY THIRD PARTY, INCLUDING CONTRACTORS, SUPPLIERS, CONSULTANTS AND STAKEHOLDERS, OR THEIR EMPLOYEES OR AGENTS, WITHOUT McELHANNEY'S PRIOR WRITTEN CONSENT.

INFORMATION ON EXISTING UNDERGROUND FACILITIES MAY NOT BE COMPLETE OR ACCURATE. McELHANNEY, ITS EMPLOYEES AND DIRECTORS ARE NOT RESPONSIBLE NOR LIABLE FOR THE LOCATION OF ANY UNDERGROUND CONDUITS, PIPES, CABLES OR OTHER FACILITIES WHETHER SHOWN OR OMITTED FROM THIS PLAN. PRIOR TO CONSTRUCTION CONTRACTOR SHALL EXPOSE LOCATIONS OF ALL EXISTING FACILITIES BY HAND DIGGING OR HYDROVAC AND ADVISE THE ENGINEER OF POTENTIAL CONFLICTS.

ORIGINAL DWG SIZE: ANSI D (22" x 34")



PO Box 1505  
Unit C - 402 Highway 3  
Fernie BC  
Canada V0B 1M0  
T 250 425 0158

PERMIT TO PRACTICE  
McELHANNEY LTD.  
PERMIT NUMBER: 1003299  
ENGINEERS AND GEOSCIENTISTS BC

Approved Sealed

REGIONAL DISTRICT OF EAST KOOTENAY  
19 24TH AVENUE SOUTH, GRANBROOK BC V1C 2N5  
**COLD SPRING CREEK  
DEBRIS FLOW MITIGATION  
TYPICAL SECTIONS**

Drawing No.  
**C-316**  
Project Number  
2441-01186  
Rev.  
0